

The Great 2024 American Eclipse

Aaron Davis - Meteorologist



SHREVEPORT, LA
NATIONAL WEATHER SERVICE

Why the Big Deal?

- **Exceptionally Rare**

- Point to point average of 375 years.
- Next U.S. eclipse won't occur until 2044.

- **Easy to Witness**

- Require little money and effort to see (depending on location).
- The sun *literally* disappears.

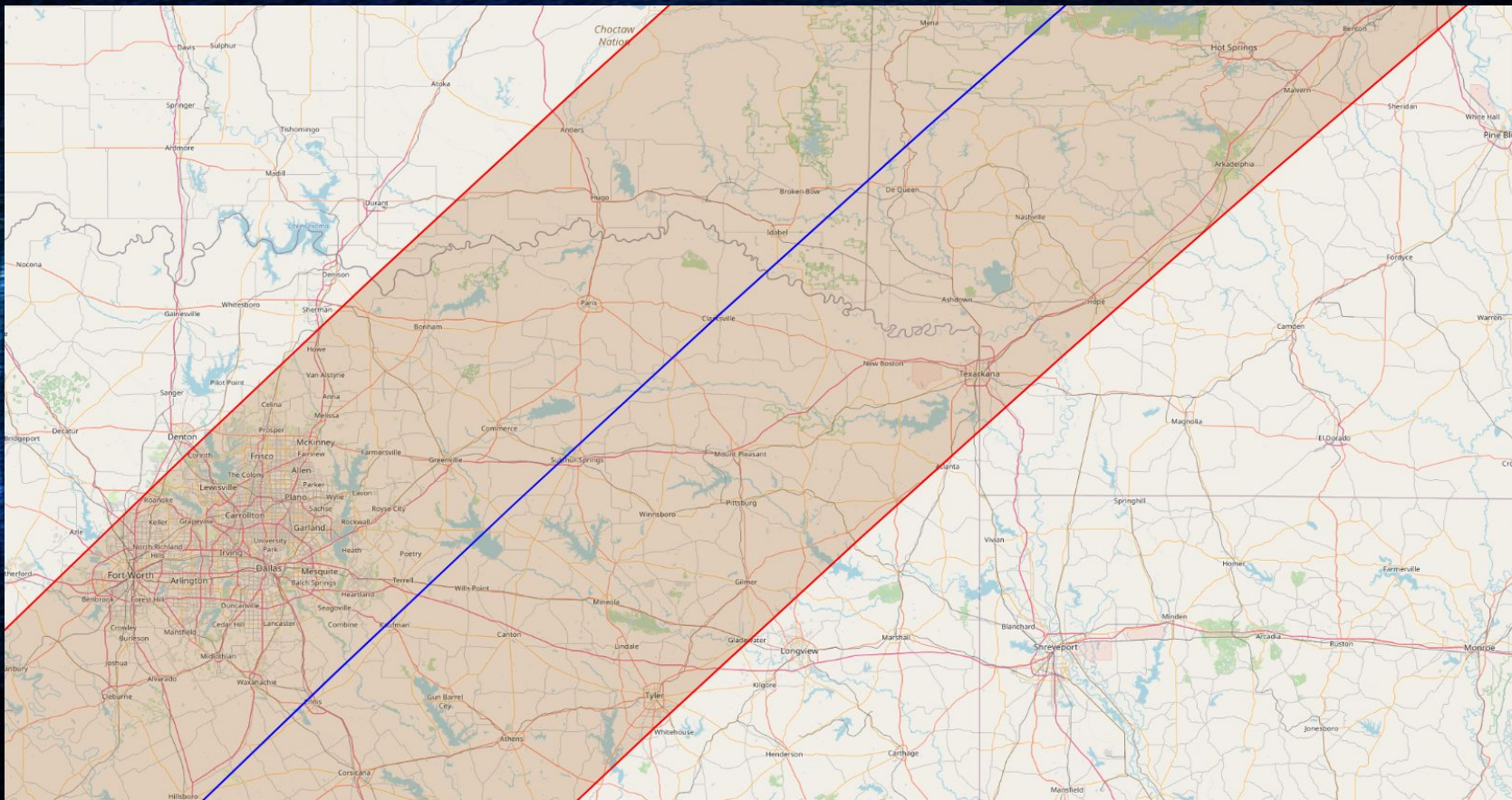
- **Fun for the Whole Family**

- Many locations throw parties to include activities and vendors.

- **Easy to Plan a Vacation Around**

- Previous eclipses have traveled over popular vacation destinations.
- HUGE boost to local economy.
- Come for the eclipse, stay for the scenery and fishing.





NATIONAL WEATHER SERVICE
SHREVEPORT, LA

[HTTPS://WEATHER.GOV/SHV](https://weather.gov/shv)

Totally Times

- Largest CONUS Totality is 4:27 minutes
- Oklahoma
 - Idabel: 4:19
 - Broken Bow: 4:17
 - Valliant: 4:03
- Arkansas
 - DeQueen: 4:17
 - Nashville: 3:42
 - Texarkana: 2:23
- Texas
 - Clarksville: 4:20
 - Mount Pleasant: 3:53
 - Mineola: 3:44
 - Tyler: 1:49



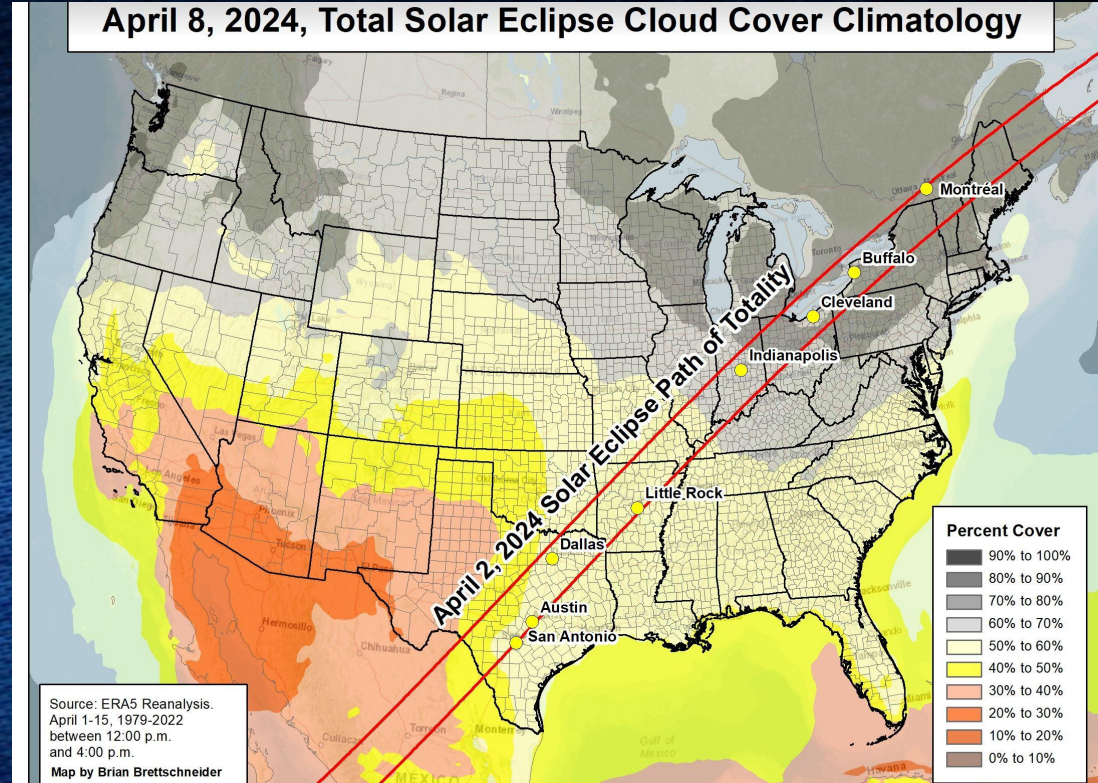
Eclipse Impacts

- **20 Million Adults Traveled to View the Eclipse in 2017.**
 - Defined as “leaving their home, point A to point B”
 - Potentially higher number in 2024
- **Large Scale Impacts to Transportation, Infrastructure, and the Grid.**
 - Congested Road
 - Supply chain issues
 - Cell service/Power Disruptions
- **In 2017, KCPR saw a 1000% Increase in Internet Searches Leading up to the Eclipse.**
 - Pilots flying in/out just for the eclipse
- **People will be Chasing Totality Times, not just Location.**
 - Prime locations will be overflowing with traffic
 - Some Oregon campsites were auctioned off for \$60,000 in 2017



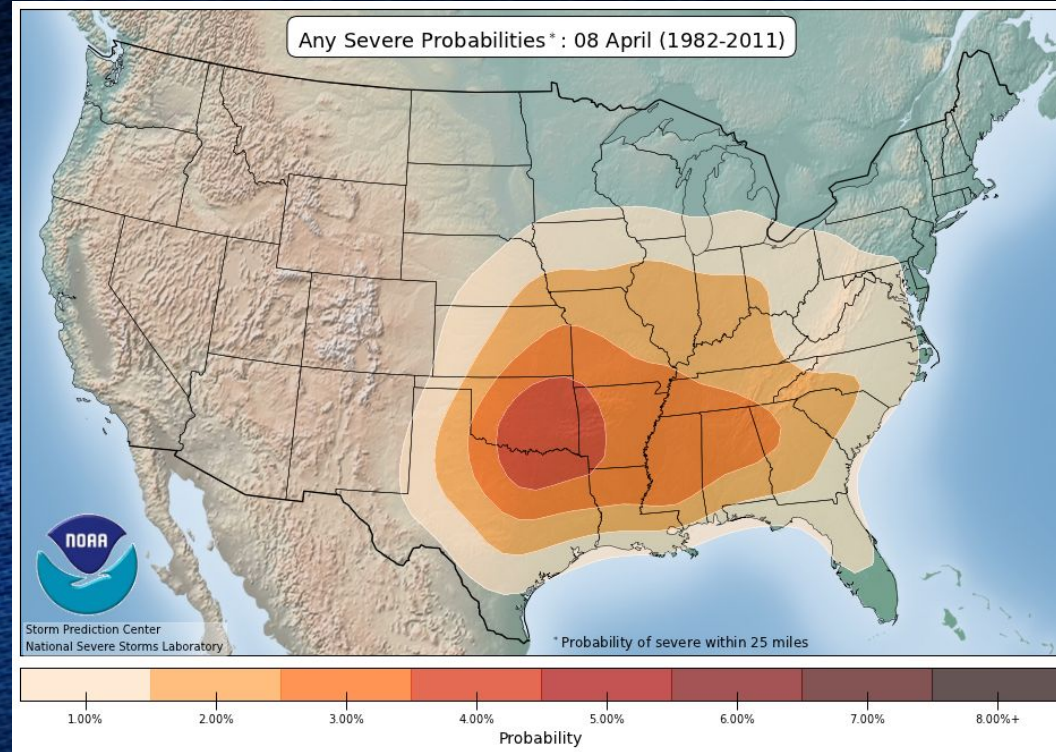
How can Weather Play a Role?

- The Weather will Make or Break the Eclipse.
- April is Historically a Grungy Month.
- Clouds, Lightning, and Severe Weather oh my.



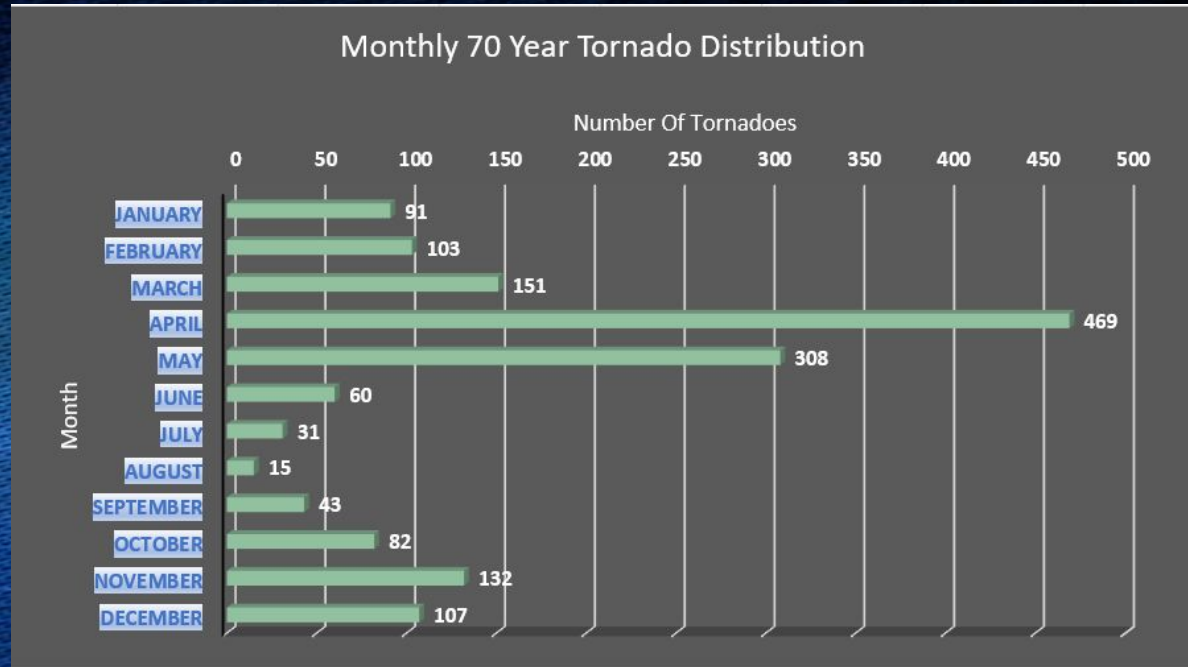
How can Weather Play a Role? (Cont.)

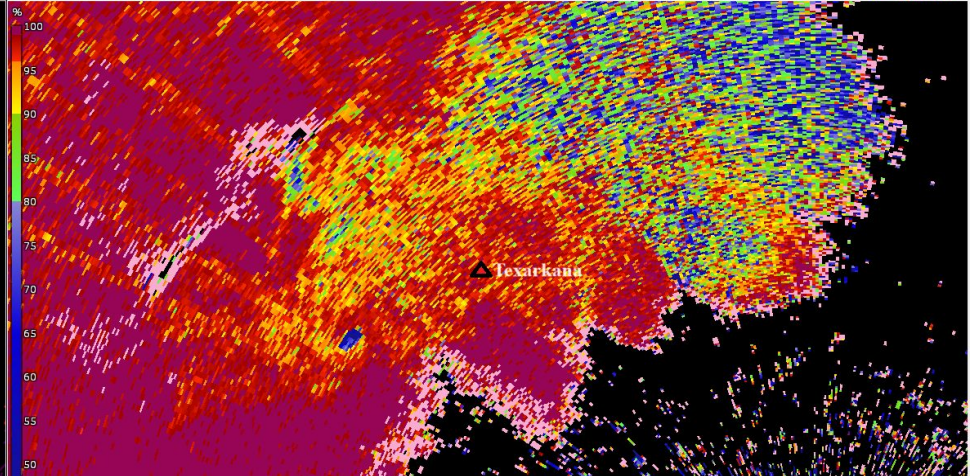
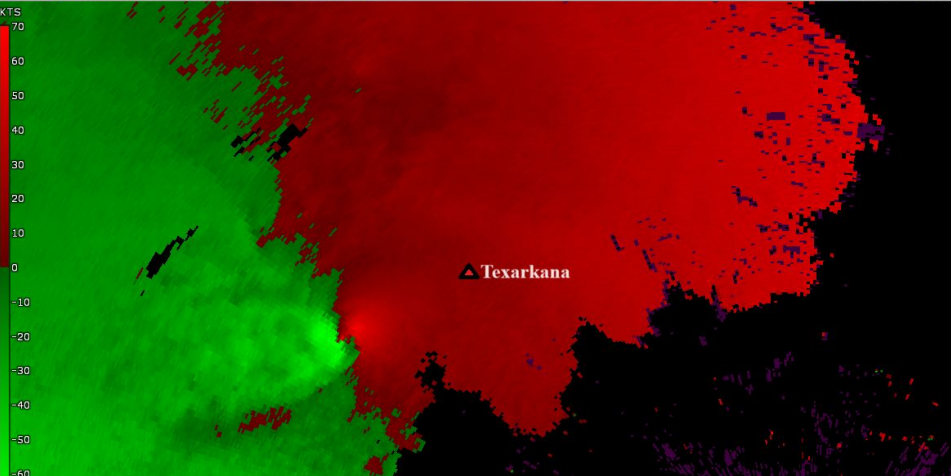
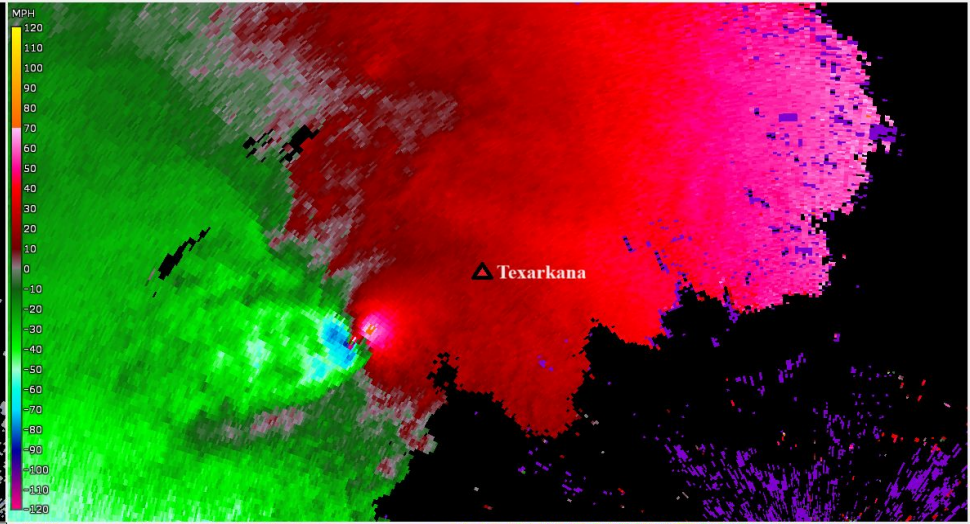
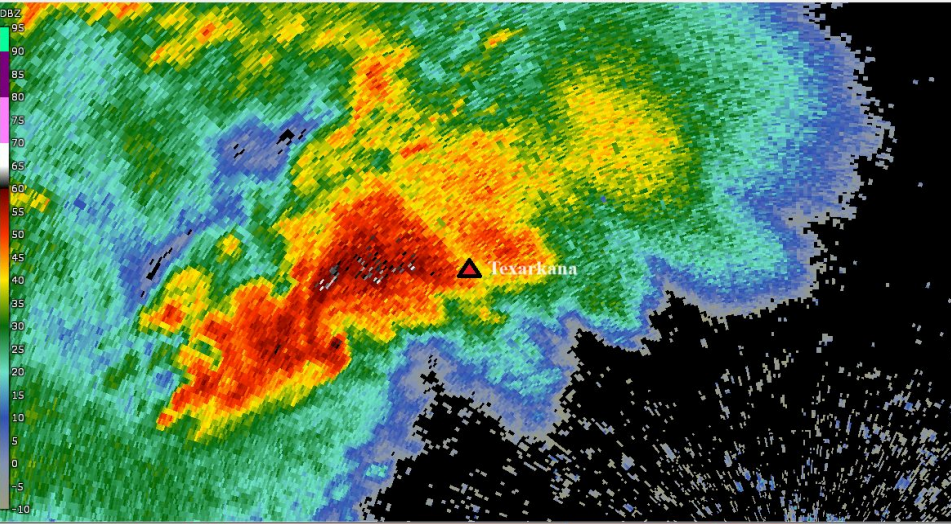
- April is Peak Severe Weather Season for our County Warning Area.
- So Important it Deserves Another Mention
- April is Peak Severe Weather Season for our County Warning Area.



How can Weather Play a Role? (Cont.^2)

- Increased Population
- Increased Vulnerability
- Increased Threat
- Exponentially Increased Risk





What are We Doing?

- **Being proactive**
 - Getting the word out.
 - Attending planning meetings.
 - Getting a feel for upcoming workload.
- **Determining Our Limitations**
 - What can we support?
 - What resources will we need?
 - On-Site Deployment Issues
- **Figuring out How To Accommodate As Many People As Possible**
- **Only You Can Tell Us What You Need**



Questions/Comments?

- **NWS Shreveport**

- sr-shv.skywarn@noaa.gov
- 318-636-7345
- weather.gov/shv

- **Aaron Davis**

- aaron.davis@noaa.gov
- 318-636-7345

